



PLUTO satisfies a demand for power and data connectivity, in informal spaces, in a way that no other module has done before. Perfectly suited to breakout areas, smaller meeting rooms, public spaces and anywhere power is needed.

With 3 outlet positions, PLUTO is perfect for a small team to power/charge their devices using conventional mains plugs. PLUTO is available in white, black and 8 vibrant gloss colours. PLUTO is also customisable with prints or logos to order.

PLUTO can be securely clamped to a standard Ø80mm desk grommet hole, screwed to any suitable surface, or supplied with side entry power cord and rubber feet for free standing use. PLUTO makes sharing power a pleasure.



COMMON COMPONENTS



Australia /
New Zealand



TUF PD USB
Charger



TUF PD R
Replacable
USB Charger



TUF HP R
Replacable USB
Laptop Charger

PLUTO can be specified with a single data / AV socket

Power and Data configurations available (3 sockets)

- Power only
- Power and USB Fast Charging
- Combined (Power, USB Fast Charging & a single Data/AV) socket.
- TUF-HP (high powered) USB Laptop Charging option*

Insulation: QikFIT modules with reinforced insulation.

Testing: 100% testing – continuity, polarity, insulation & earth.

Soft Wiring (power): Power wired to Wieland GST connector allows starter cables to be changed to suit requirements, especially useful during moves and changes (CHURN). PLUTO with Wieland GST entry are rated to 20Amp.

*TUF HP requires an external QF30 PSU (power supply unit) or a canister PSU (power supply unit) neatly fitted into the base or one of the apertures.

FEATURES



PLUTO is available in gloss black, white and a range of colours



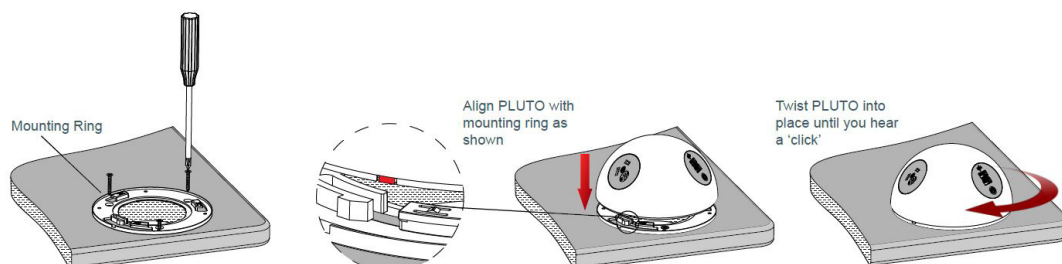
TUF-R (Upgrade / Replace)

Anyone can upgrade or replace a damaged TUF-R module quickly using a simple tool, no need to turn off the power or call an electrician. Replace the module, not the whole product.

The unique benefit of being easily replaced saves time and resources and significantly reduces waste. Perfect for high usage spaces like education, where, if needed, TUF-R can quickly be replaced in less than two minutes, minimising downtime for the end user.

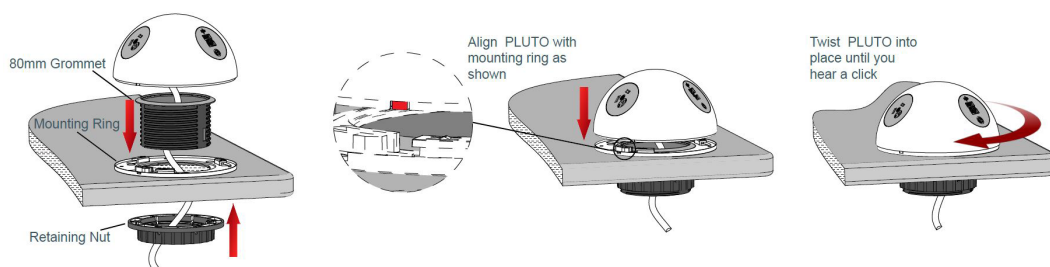
Pluto mounting adaptor ring with screw fixing

Place mounting ring over 50 to Ø80mm hole. Screw mounting ring in place.



Pluto mounting adaptor ring with grommet fixing

Place mounting ring over 80mm hole. Place 80mm grommet into mounting ring and screw up retaining nut until firmly in place.



Pluto Clamp 60 Kit

PLUTO Clamp 60 comes pre fitted with bolts to ensure a more secure fixing. Place PLUTO over Ø60mm hole feeding the bolts through. Use the retaining plate and nuts to securely fix the PLUTO in place.

